



DISCOVER
BISBEE

**CREATIVITY
FRIENDLINESS
STYLE**



BISBEE

TABLE OF CONTENTS

Attractions _____	4 - 5
Insta-worthy Spots _____	6
Arts & Culture District _____	7
Bisbee's Neighborhoods _____	8 - 9
History _____	10 - 11
Mining _____	12
Shopping _____	13
Dining & Nightlife _____	13
Entertainment _____	13
Maps _____	14 - 15
Stargazing _____	16
Weather Report _____	17
Annual Events _____	18 - 20
Fun for Kids and Families _____	21
Lodging _____	22
Tours _____	22
Regional Activities _____	23

ATTRACTIONS

1 Copper Queen Mine Tour

Head underground and back in time. Plan ahead and be sure to make reservations!

queenminetour.com



2 Bisbee Mining & Historical Museum

At the center of town holds the heart of Bisbee's history. Take your time exploring the first rural Smithsonian affiliate museum.

bisbeemuseum.org



3 Bisbee Arts & Cultural District

The vibrant and visible face of the City's creative soul. Explore public art, galleries, music and more within the district.

bisbeeartsculture.org



4 Copper Queen Library

Voted as the best small library in the US in 2019, Bisbee's library truly is a community centerpiece and historical gem all in one.

copperqueenlibrary.com



5 Walk Bisbee's Heritage Stairs

One of Bisbee's most magnificent architectural achievements are the countless concrete stairs that cling to the steep canyon sides. Lack of flat land and the need for miners and bosses to reside near their workings led to the construction of hundreds of hillside homes beginning in the late 1870s.



6 Erie Street in Historic Lowell

Walk back in time and visit a post-apocalyptic landscape from the 1950s. Erie Street is all that is left from what once was a mining town incorporated in the early 1900s. The rest of this historic neighborhood was demolished to widen the open pit copper mine.

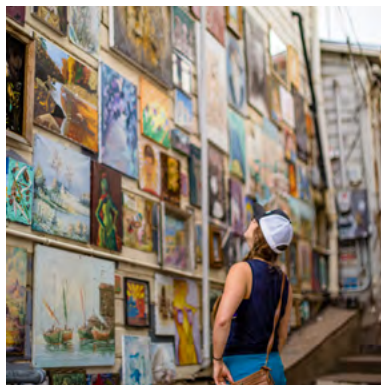
Erie Street is continually restored by a vibrant and passionate community of residents and volunteers who want to remember a different America. So although you can no longer see a show at Lowell's movie theater or pay \$0.22 for gasoline, the Lowell Americana Project has made it possible to experience the street as a living snapshot of another time. And not everything on Erie Street is purely decorative—visit the Bisbee Breakfast Club for an excellent Huevos Rancheros.



Photo by Steve Pauken

Steve Pauken Photo
P 5

insta-worthy spots



Top left: the Peace Wall mural by artist Rose Johnson on upper Main Street **Top center:** sculpture by artist Ben Dale in front of private residence in Old Bisbee **Top right:** aerial view of the Lavender Pit, open pit copper mine, stop at the lookout on Historic Highway 80 **Middle left:** a view from Juniper Flats overlooking Old Bisbee **Middle center:** an out-of-this-world mural in Historic Lowell which is an insta-gold mine **Middle right:** Main Street in Historic Old Bisbee **Bottom left:** Day of the Dead mural in historic Brewery Gulch **Bottom center:** Broadway Stairs Gallery open air informal art gallery located along side a breezy set of stairs in the Gulch **Bottom right:** Heritage Stairs in Old Bisbee residential area. Please remember to respect private property when exploring the stairs!

Arts & Culture District

The heart and driving force of Old Bisbee.

It was created with a vision of attracting a bi national and regional audience of residents, visitors, and businesses and encouraging a vibrant mix of uses, spaces, and activities. The district aims to protect and grow the arts and culture of Bisbee while celebrating and enhancing the unique identity of this special place. Promoting a creative economy and adding and protecting affordable options for creative people to work and live is a top priority. Ensuring the district is an inclusive place for everybody and also serving as a resource to promote creative productivity is the goal.

bisbeeartsculture.org



Cultural Facilities

The cornerstone of the district is the many facilities that offer cultural programming for visitors and residents. Explore Bisbee's vibrant past and culturally rich present at the Copper Queen Mine, Bisbee Mining & Historical Museum, Copper Queen Library, Bisbee Restoration Museum, Central School Project and Muheim Heritage House. Let the past come alive and see where the future is headed.

bisbeeartsculture.org/cultural-facilities

Community Radio

The Bisbee Radio Project, Inc. is a non-profit dedicated to enhancing art, entertainment, culture, and education through radio. KBRP-LP is a non-commercial, listener-supported, educational, low-power community radio station. KBRP is dedicated to providing independent, non-corporate and socially responsible programming. kbrpradio.com

Art Galleries

Visit one of Bisbee's many galleries to see what the art scene is all about here... shops may come and go but one thing that always has a big presence on Main Street are art galleries.

discoverbisbee.com/galleries Discover Bisbee's monthly Art walk that occurs every second Saturday of each month in Old Bisbee. Numerous galleries, shops, and restaurants stay open late until 8pm.

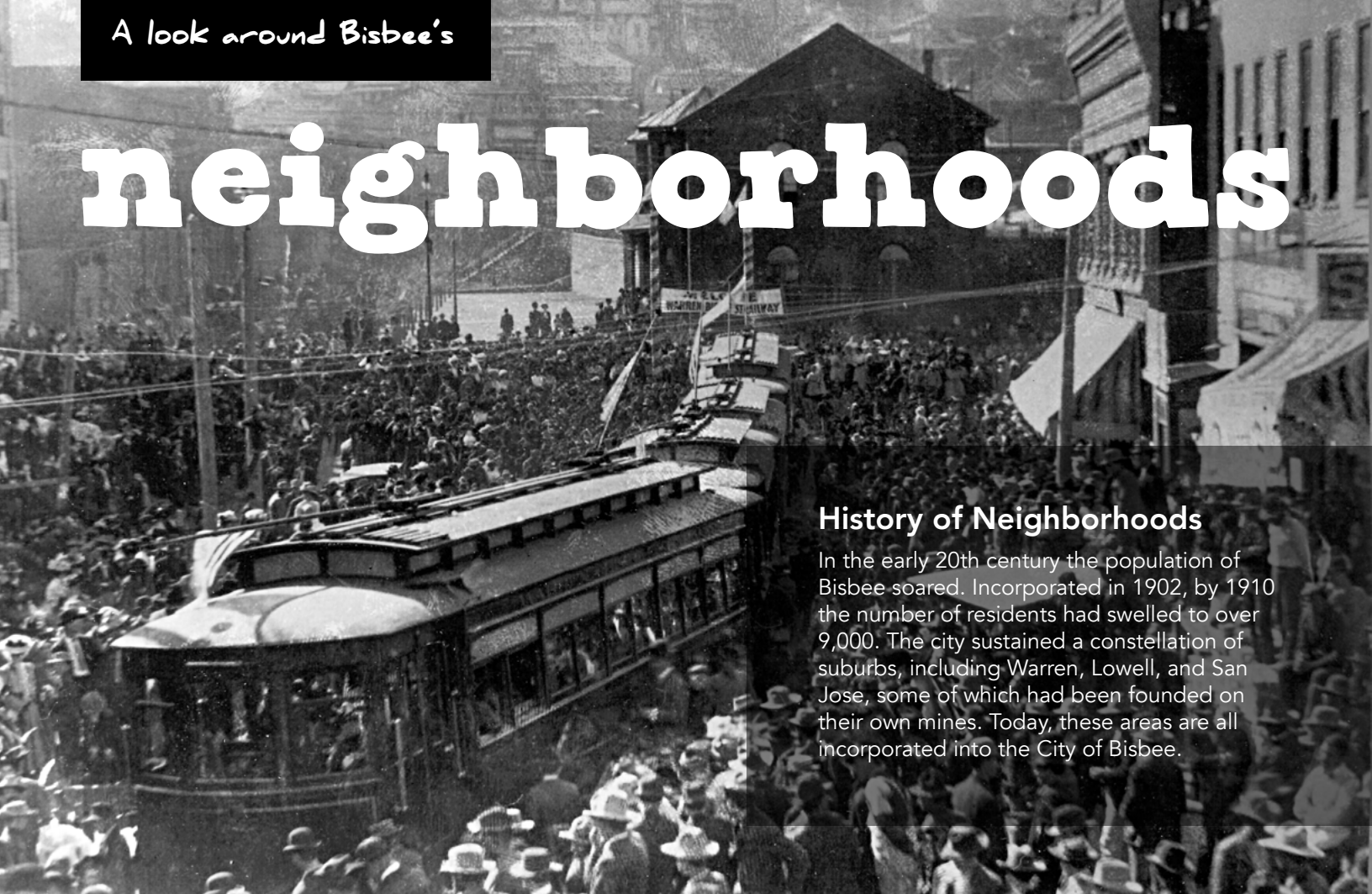
bisbeeafter5.com

Public Art

Sprinkled throughout the district is a wide variety of public art in the form of murals, sculptures and even an outdoor alley gallery. Set out on foot and keep an eye out for art in unexpected places. Much of the art you will find is created by local artists and even nationally known street artists.



neighborhoods



History of Neighborhoods

In the early 20th century the population of Bisbee soared. Incorporated in 1902, by 1910 the number of residents had swelled to over 9,000. The city sustained a constellation of suburbs, including Warren, Lowell, and San Jose, some of which had been founded on their own mines. Today, these areas are all incorporated into the City of Bisbee.

Dedication of the Street Car 1908. The street car ran first from Warren to the Phelps Dodge General Office and later the tracks were laid in Tombstone Canyon.



Old Bisbee

Old Bisbee is the historic center of town. The very walkable Main Street turns into Tombstone Canyon as you head uphill, and serves as the main thoroughfare of the town, offering vistas of hills flowing with seemingly precarious miners houses (most of which have been renovated.) From the centrally located Bisbee Mining and Historical Museum, visitors may head up either Main Street or Brewery Gulch. Historical residential sections of town can be explored by walking up side streets off either road.

Lowell

Lowell was, at one time, a sizable mining town located just to the southeast of Old Bisbee. The majority of the original town site was consumed by the excavation of the Lavender Pit mine during the 1950's. However, what remains of Lowell today is a strikingly intact, historical mid-century street – often utilized as a backdrop for film and video shoots, and well worth a visit to walk back in time. Lowell is perched at the southern end of the dramatic Lavender Pit, itself a must see while in Bisbee.





Photo by Steve Pauken

Warren

The Warren district of Bisbee has a unique history all its own. Warren was designed according to the City Beautiful plan, at the turn of the century. The neighborhood is the first planned community in Arizona intended as a home for the mine management and other more affluent citizens of the town.

Warren is built around the Vista, a north-south running stretch of park, where the city's Farmer's Market is held each Saturday throughout most of the year. Warren has a fine collection of Arts and Crafts style bungalow houses. Many have been recognized as historic places. The city offers an annual Historical Home Tour during which a varying selection are offered for public display. At the southern end of the Vista sits the historic Warren Ballpark.



San Jose

The San Jose section of Bisbee is where much of the town's day-to-day business is done. The area is certainly worth exploring for its proximity to Naco, Mexico, and its broad vistas of the surrounding Sky Island mountain ranges. Bisbee is the seat of Cochise County, and the county offices are located in San Jose. Many families live in San Jose, and it's where locals from all districts, as well as visitors, go to buy groceries and other sundries.



Galena, Briggs, Saginaw, Bakerville, Tintown, Don Luis

Smaller residential neighborhoods which are dotted along the thoroughfares of Bisbee were built by and for the early miners. Many homes which are referred to as miner shacks have been renovated. Many of the working class people of Bisbee live in these quiet neighborhoods. The Bisbee Garden Tour highlights the gardens and homes in all the neighborhoods every Labor Day weekend.

Bisbee's HISTORY



Bisbee beginnings

In 1877, a reconnaissance detail of U.S. army scouts and cavalrymen was sent to the Mule Mountains to search the area for renegade Apaches. What civilian tracker Jack Dunn found instead were signs of mineralization indicating the presence of lead, copper and possibly silver. The first mining claim was staked in what would later become the City of Bisbee. The filing of this claim, and a multitude of others sent prospectors and speculators scurrying to the Mule Mountains in hopes of striking it rich. Numerous ore bodies were located, and Bisbee soon became known as the "Queen of the Copper Camps."

Early mining years

Mining in the Mule Mountains was quite successful, and Bisbee proved to be one of the richest mineral sites in the world, producing nearly three million ounces of gold and more than eight billion pounds of copper, not to mention the silver, lead and zinc that came from these rich lands.

By the early 1900's, driven by the booming mining industry, Bisbee had become the largest city between St. Louis and San Francisco. With a population of over 20,000 people by the beginning of the century, Bisbee was one of the most cultured cities in the west. The town is still home to the nation's (arguably) oldest

ball field (Warren Ballpark), Arizona's first golf course (Turquoise Valley), and the state's first community library (Copper Queen), all dating from this period, and all still currently in operation, and open to the public.

Along with Bisbee's cosmopolitan character, the colorful, rough edges of the mining camp could still be found in the notorious Brewery Gulch, with its saloons and brothels. In its heyday, the Gulch boasted nearly 50 saloons and was considered the one of the liveliest spots in the west. Historic taverns still retain the rich character and boom-town flavor of this period.

The Bisbee Deportation

Not all of Bisbee's colorful history is rosy, however. The Bisbee Deportation of 1917 was not only a pivotal event in Arizona's history, but one that had an effect on labor activities throughout the country. The notorious anti-labor crime involved the illegal kidnapping and deportation of about 1,300 striking mine workers, their supporters, and citizen bystanders by 2,000 members of a deputized posse on July 12, 1917.

The action was orchestrated by Phelps Dodge, the major mining company in the area. When miners attempted to organize to gain better working conditions and wages, the company, attempting to prevent unionization, made allegations that the workers were



members of the Socialist-affiliated Industrial Workers of the World (IWW or Wobblies). The arrested were first held at the Warren ballpark before being loaded onto cattle cars and deported 200 miles (320 km) to Tres Hermanas in New Mexico, for a 16-hour journey through desert without food or water. Once unloaded, the deportees, most without money or transportation, were sternly warned against returning to Bisbee.

Late mining period

Beginning in 1917, open-pit mining was successfully introduced to meet the copper demand during World War I.

During almost a century of mining, 8 billion pounds of copper, 102 million ounces of silver and 2.8 million ounces of gold along with millions of pounds of zinc, lead and manganese were produced. By 1974 ore reserves had been depleted and December brought the announcement of the impending closure of mining operations in Bisbee. Phelps Dodge curtailed open pit operations that year and ceased underground operations in 1975.

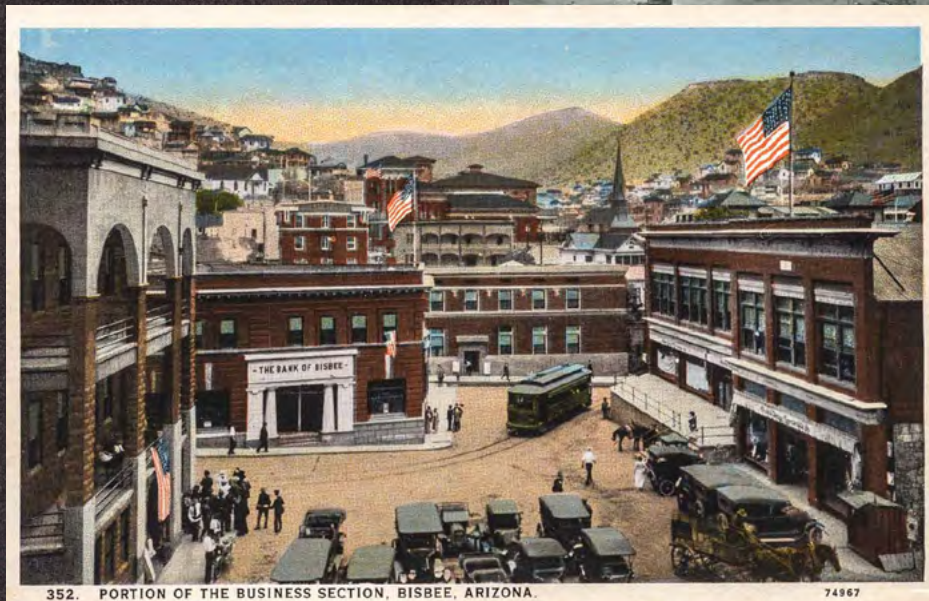
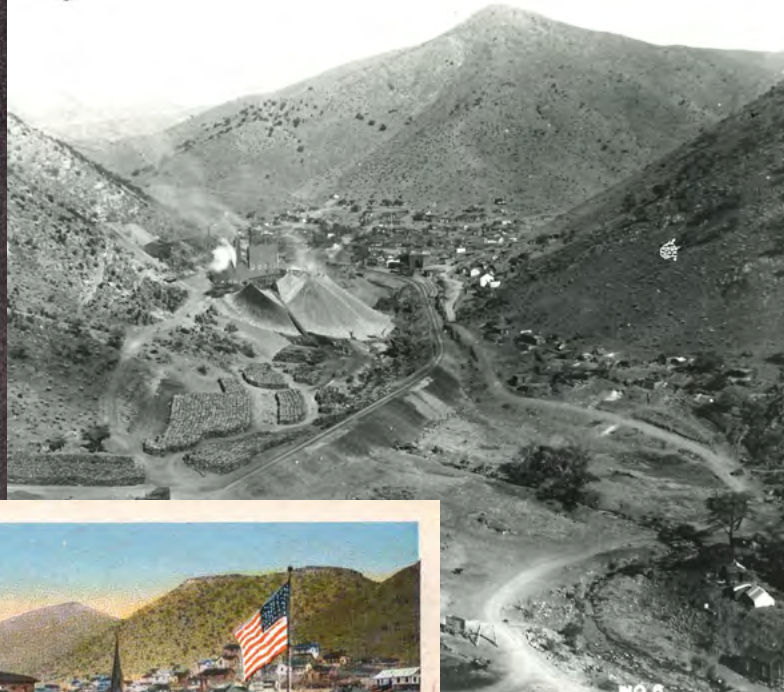
Post-mining transition

Bisbee remained an active mining community until the mid-1970's. When the mine closed, a tremendous shift occurred in the local population. As many mining employees and their families left to pursue work elsewhere, an influx of creative free spirits found Bisbee's historic district to be an attractive, inspiring, and inexpensive location to settle and pursue their artistic endeavors.

The cosmopolitan present

Today, Bisbee is known as a culturally rich community that includes an active and varied population. Bisbee retains its welcoming spirit, offering visitors a rich mix of art, music, history, architecture, outdoor activities, dining and nightlife.

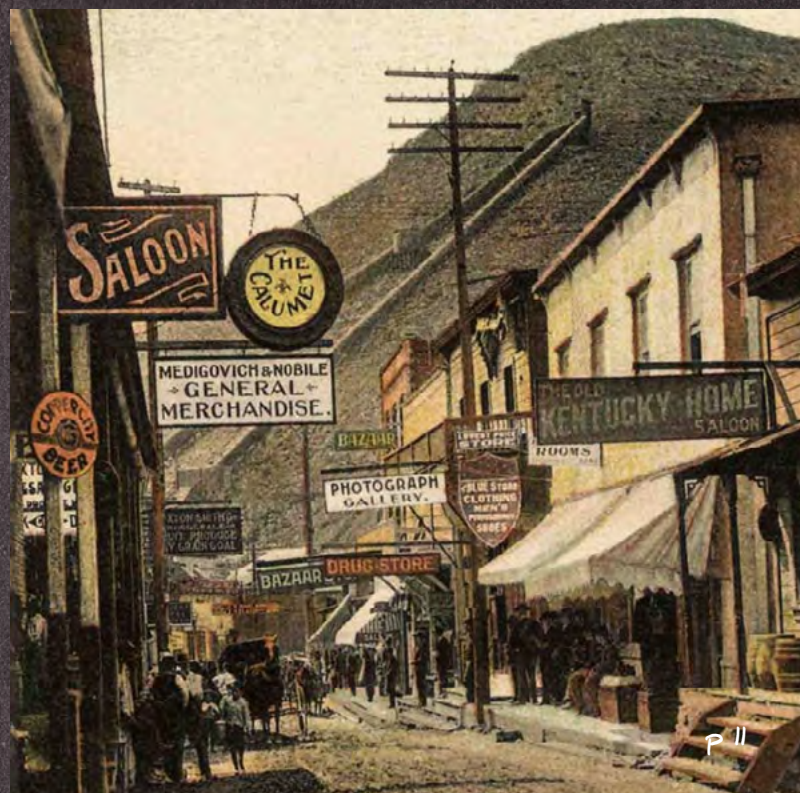
The Smithsonian-affiliated Bisbee Mining and Historical Museum has welcomed, educated and entertained more than a half-million visitors over recent decades. Featured among its exhibits is "Bisbee: Urban Outpost on the Frontier", an in-depth look at the lives of the miners and settlers of this unique area of the southwest. And the world-famous Queen Mine Tour offers a fascinating, up-



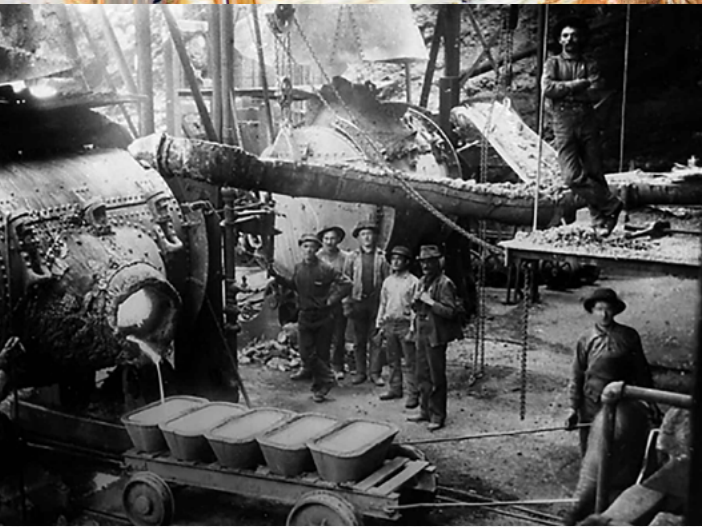
close experience of the underground world of the miners who carved their community and a living out of bedrock.

Yearly events like the Bisbee 1000, Bisbee Pride Festival, and the

Historic Home Tour draw crowds from around the region and across the globe. Ongoing Bisbee highlights include the monthly Bisbee After Five art walk and a weekly farmer's market featuring regional artisan goodies.



Learn about: **MINING**



Queen of the Copper Camps

Once known as "the Queen of the Copper Camps", Bisbee has proven to be one of the richest mineral sites in the world, producing nearly three million ounces of gold and more than eight billion pounds of copper, as well as significant amounts of silver, lead and zinc.

A high quality strain of turquoise called "Bisbee Blue" was a by-product of the copper mining. Numerous other museum-quality mineral specimens have come from Bisbee area mines and are to be found in collections worldwide. Some of these include: Cuprite, aragonite, wulfenite, malachite, azurite, and galena.

Learn more about mining and minerals in Bisbee at bisbeeminingandminerals.com

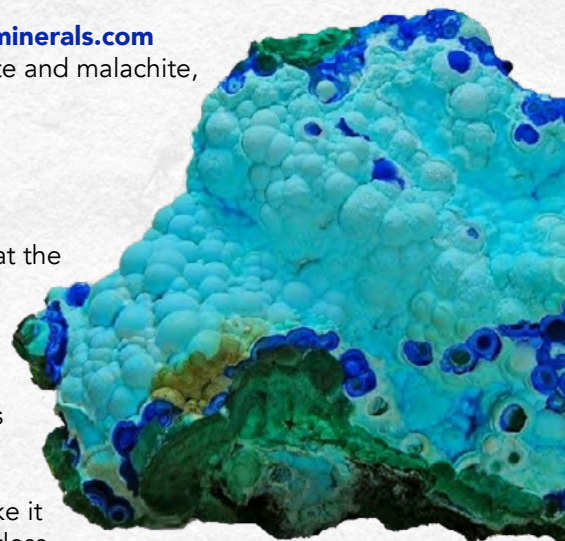
The mineral pictured on the right is Chalcoalumite on and replacing azurite and malachite, 12 cm. Holbrook Extension, Lavender Pit Mine, Graeme collection

Digging In: Bisbee's Mineral Heritage

Visit a state-of-the-art mining exhibit beautifully crafted by Smithsonian designers at the Bisbee Mining and Historical Museum. You'll enter through a changehouse before winding through an underground mine rich with minerals, a crystal cave, and the history of hard-rock miners who blasted, drilled, and mucked more than 2,000 miles of tunnels through the surrounding mountains. As past meets present, you then segue into today's world of open-pit mining, where new technologies address challenges posed by a high-demand marketplace and low-grade ore.

The electrification of America that commenced in the early 1880s continues to make it possible for distant power plants to energize our computers, televisions, and countless other tools and technologies. Digging In tells a story that affects all our lives, with the goal of challenging long-held perceptions about our role in copper's story. All of us are dependent on products that use copper. If you want to know what life would be like without copper, think about the last time your electric power went out!

Digging In interweaves the complex stories of how society's demand for copper impacted the history of copper mining in the West, the story of how a western mining community responded to that demand, and how its response has shaped our national history. bisbeemuseum.org/digging-in



small businesses

Shopping

Main Street boasts a unique collection of shops where you will find antique stores, original art galleries, specialty food markets, trendy boutiques and family friendly establishments. There are no corporate chains that exist in Old Bisbee, there is a commitment to keeping Bisbee's shops locally owned and operated. When you shop here you are truly supporting local.

discoverbisbee.com/shops



Dining & Nightlife

For such a small town Bisbee's restaurants are bountiful. Eclectic cuisines offer everything from street food to fine dining. Be sure to inquire about regional wines from Arizona and make it a point to stop into Bisbee's breweries. Whether you are vegan, vegetarian or carnivore, there is something to satisfy all taste buds. Plenty of outdoor seating and patios to enjoy Bisbee's wonderful year-round climate and to experience the sights and sounds of a bustling downtown.

discoverbisbee.com/dining-nightlife

Entertainment

Bisbee is known for having a good time. Many people come to Bisbee to hear great live music. Local establishments put an emphasis on bringing the very best musicians to town and there are quite the impressive array of homegrown performers as well. On almost any given night you are sure to find street musicians, local and traveling bands that will make your memories truly magical. Let the rollicking begin. What happens in Bisbee stays in Bisbee but it sure does circulate quickly among the locals as word of mouth is no joke here.

discoverbisbee.com/whathappening



lay of the land MAPS



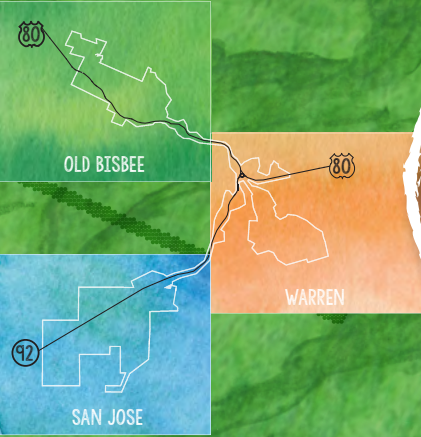
Geography of Bisbee

The neighborhoods of Bisbee are nestled into the Mule Mountains and are divided geographically by the historic mining infrastructure including the massive open Lavender Pit along Historic Route 80. Many of the houses in the Old Bisbee District seem to be clinging to the hillside and indeed they are. The Mule Mountains create a barrier that limits building to expand beyond what was developed long ago thus creating a sense of going back in time. New and existing structures in the historic district are renovated under the direction of a design and review board which aims to keep the historic integrity intact. At first glance it appears that the Historic District is the entirety of Bisbee when in fact, there are many neighborhoods in Bisbee to discover and explore.

discoverbisbee.com/maps



DISCOVER BISBEE NEIGHBORHOODS



HISTORIC OLD BISBEE

LEGEND

- PUBLIC RESTROOMS
- VISITOR CENTER
- BANK/ATM
- PUBLIC PARK
- BISBEE LIBRARY
- GAS STATION
- CENTRAL SCHOOL PROJECT
- MUSEUM
- QUEEN MINE TOUR
- COCHISE COUNTY COURTHOUSE
- CITY POOL
- FIRE STATION
- SCHOOL
- BOYS & GIRLS CLUB
- BASEBALL FIELD
- TENNIS COURTS
- SKATE PARK
- BISBEE CITY HALL
- HOSPITAL
- POLICE STATION
- CEMETERY
- GROCERY STORE
- LAUNDROMAT
- BISBEE DOG PARK



Tilt your head up

STARGAZING



The night sky in Bisbee

When you are in Bisbee at night make sure to tilt your head towards the skies. You are in for a treat as the Milky Way Galaxy is regularly visible here and the stars are always shining brightly. Efforts at the city and county levels aim to keep light pollution low to enhance night star viewing. Because of the often cloudless skies and comfortable night temperatures, stargazing is always in fashion in Bisbee.

Above image was taken in Old Bisbee near B Mountain. The images on the right and below were taken with a telescope in Bisbee by City Manager, Steve Paulkin.





the weather report

Monthly Weather Averages

Month	High / Low(°F)	Rain
January	57° / 31°	3 days
February	61° / 34°	3 days
March	67° / 38°	2 days
April	74° / 43°	1 day
May	81° / 50°	0 days
June	90° / 59°	2 days
July	87° / 62°	10 days
August	84° / 60°	9 days
September	82° / 55°	5 days
October	75° / 47°	3 days
November	65° / 37°	2 days
December	56° / 31°	3 days

Source: NOAA

Desert Temperature Swings

In the desert you will find sometimes stark temperatures changes between the day and night. The main reason is that desert air is extremely dry. Without water, which does a good job at storing heat, the temperatures can drop rapidly at night.



“The Bisbee District has the best year round climate on Earth.”

A downtown mural states the above quote and it is certainly up for debate. Bisbee is a mile high in the Mule Mountains and offers a much different climate that most people think of when they think of Arizona weather. As with most of Arizona, Bisbee offers plenty of exuberant sunshine and crystal clear blue skies. The seasons consist of mild winters that are known to get a snowfall or two that quickly melts the following day. A warm and windy springtime transitions into a hot June. July welcomes the summer monsoon. The rain awakens the surrounding mountains to all shades of green and turns the usual dry washes into flowing creeks. Popular with locals is a waterfall that flows after heavy rain on the side of the mountain along Historic Highway 80 approaching town. September brings dry and warm weather that lasts until Thanksgiving.

mark your calendar

annual events

January



New Years Eve

Ring in the New Year with Bisbee! The end of the holiday season goes out with a bang here. People come far and wide to celebrate in style. Look for themed parties thrown at local venues for a roaring good time.

March



Return of the Turkey Vultures

Return of the Turkey Vultures is a celebration welcoming back the migrating birds to Bisbee. Always the second weekend in March because that is usually when they start showing up! facebook.com/BisbeeVultures

April



Copper City Classic Vintage Baseball Tournament

America's favorite pastime comes alive in vintage style. Teams are dressed in period uniforms. A fundraiser for the Historic Warren Ballpark. friendsofwarrenballpark.com

February



Bisbee Chocolate Tasting

Bisbee's commercial and home bakers donate 1000's of pieces of chocolate delicacies for ticket holders at this very popular event, now past it's 30th year. Guests also have a chance to participate in a Silent Auction and throw their names into a Raffle.

facebook.com/bisbeechocolatetasting



MAKE Youth Arts Festival

Each year in the month of March, CSP celebrates National Youth Arts Month with the MAKE Youth Arts Festival. It is an all-day arts festival for children from age 3 to 17 which provides interactive, multidisciplinary hands-on art making at no cost to families. MAKE also celebrates art created by young people with the Youth Art exhibit.

centralschoolproject.org/make-festival

June



Bisbee Pride

Annual Bisbee Pride 3 day Festival held father's day weekend each year. Come celebrate with the LGBT community in Bisbee with fun events, music, pool party, parade and more.

facebook.com/bisbeepride

July



4th of July Coaster Races, Parade & Fireworks

For more than a century, Bisbee has celebrated the Fourth of July with parades, sporting contests, patriotic events, dances, picnics and fireworks. This is Bisbee's annual homecoming weekend for families to gather and picnic in the park and celebrate America's freedom.

August



Pirates of the High Desert

The high seas meets the high desert for this city-wide 3-day costume event. Come dressed as pirates and mermaids. Take part in events such as pub crawls, costume contests, magic and music shows and more.

[facebook.com/BisbeePirates](https://www.facebook.com/BisbeePirates)



Altered Books Show

The Altered Books Event is a benefit for the Copper Queen Library in Bisbee. Artists from near and far enter incredible work in a Silent Auction.

[facebook.com/Altered-Books](https://www.facebook.com/Altered-Books)

September



Bisbee Garden Tour

Annual Labor Day weekend fundraiser to support the beautification of public spaces in the City of Bisbee. Get a glimpse of home and garden spaces in the many neighborhoods of Bisbee!

[facebook.com/bisbeegardentour](https://www.facebook.com/bisbeegardentour)



Brewery Gulch Daze

Every Labor Day weekend come participate in fun mining, mucking events and much more in the Gulch. Come join in on some rowdy fun!



Car and Bike Show

Come see an eclectic collection of vintage cars, hot rods and motorbikes in the beautiful Warren District. This fundraiser supports programming for the Boys & Girls Club of Bisbee.

[facebook.com/Cars-Bikes-at-the-Vista](https://www.facebook.com/Cars-Bikes-at-the-Vista)



Blues in Bisbee

A benefit for Easterseals Blake Foundation. Live blues music, dancing, food, drinks and more. Come shake your money maker!

[bluesinbisbee.com](https://www.bluesinbisbee.com)

October



Bisbee 1000 The Great Stair Climb & Craft Beer Festival

The most unique physical fitness challenge (or friendly fitness walk) in the USA! Bisbee 1000 The Great Stair Climb is arguably one of the most unusual and challenging events in the world. The 4.5-mile course features nine staircases (over 1000 total steps) connected by winding roads. While enjoying the challenge, runners and walkers alike see some of the most scenic parts of Old Bisbee. Take a delightful journey up the stairs and down the roadways in Europeaneseque Bisbee! [bisbee1000.org](https://www.bisbee1000.org)



Vintage Bisbee Wine Tasting

Food, fun, wine and music. Bisbee Rotary Club fundraising event to support High School students.

[facebook.com/bisbeerotary](https://www.facebook.com/bisbeerotary)

bisbee events

October



Plein Air Festival

Join other artists in painting Old Bisbee's historic architecture, sprawling staircases, vintage streets, industrial mining remnants, and colorful homes set amidst the scenic Mule Mountains to compete for prize money.
bisbeeafter5.com/plein-air-festival



B.R.A.T.S. Parade

Bisbee Rolling Arts Transportation Society is a ragtag posse of creatives who build gravity-powered art carts that roll through the streets of Bisbee.
bisbeebrats.com

November



Mariachi Festival

Come and listen to a great lineup of multi-talented Mariachi Groups and beautiful Folklorico dancers from throughout the Southwest perform at the Annual Bisbee Mariachi Festival. Proceeds will benefit the Bisbee Coalition for the Homeless.
bisbeemariachifestival.com



Sidepony Express Music Fest

A three-day showcase of emerging independent musical artists in one of the most quirky, colorful and inspiring places on earth...none other than Bisbee, Arizona.
sideponyexpressmusicfestival.com



Historic Home Tour & Chair Auction

The Bisbee Woman's Club presents some of the most interesting, unique and historic homes in Bisbee. Tour stunning homes over Thanksgiving Day Weekend.
bisbeewomansclub.com



Festival of Lights & Small Town Holiday

Holiday Festival kicking off the season in downtown Old Bisbee with a lighting ceremony along with Santa, caroling, contests, crafts, music and more.

Monthly Events



Bisbee After 5 Art walk

Bisbee After 5 is a monthly art walk event that occurs on the Second Saturday of each month in Old Bisbee. Numerous galleries, shops, and restaurants stay open late, until 8:00 pm. Artists' receptions, live entertainment, special promotions, and a free raffle are some of the many things we offer!
bisbeeafter5.com



Farmer's Markets

Every Saturday head over to Vista Park in the Warren District and/or to the San Jose at La Ramada off Naco Highway to enjoy music, local food and craft vendors.

facebook.com/Bisbee-Saturday-Market
facebook.com/bisbeefarmersmarket

fun for kids & families

DAYS

FRIDAY

ACTIVITY

Travel deep underground at the **Queen Mine Tour**.

EAT

Grab a burger and shake at vintage **Dot's Diner**.

PLAY

Science Fridays for kids at the **Bisbee Science Lab**.

SATURDAY

Go ghost hunting on the **Old Bisbee Ghost Tour**.

Eat pizza at a converted gas station at **Screaming Banshee Pizza**.

Expand your mind at the kids section of the **Copper Queen Library**.

SUNDAY

An interactive trip back in time for the whole family at the **Bisbee Mining Museum**.

Ice cream on Main Street at **Pussycat Gelato**.

Cool music park and playground at **Vista Park**.



Play on the mining carts at the Mining Museum



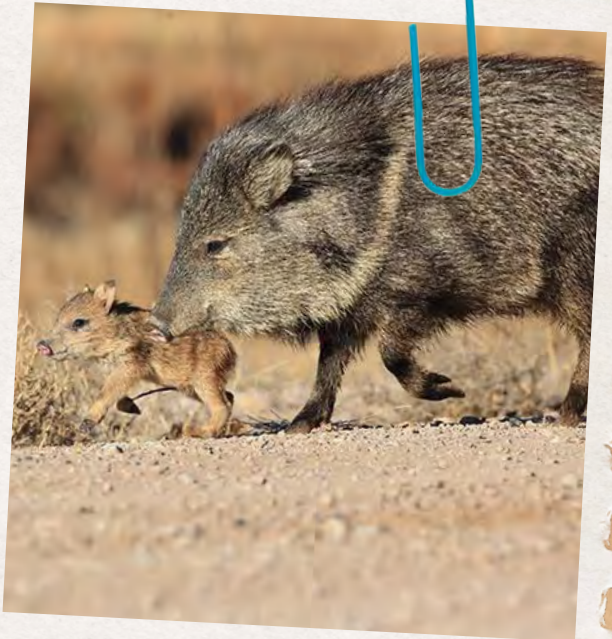
Lunch at Dots Diner



Ride the train into the Queen Mine!



Delicious Italian ice cream at Pussycat Gelato



Learn about the wildlife in Bisbee. See if you can spot a javelina but make sure you respect their space!

BisBee
is FUN!



lodging + tours



Lodging

Bisbee has quite the variety of places to stay for such a small town. There are places to stay in just about every neighborhood. From full service hotels to extended stay hotels with kitchenettes to bed & breakfasts to RV Parks to guesthouses on Airbnb you should be able to find somewhere very comfortable. There are places that will gladly accommodate pets, big groups or just for a single occupant. Follow the link below to find a great place to call home during your stay in Bisbee.

discoverbisbee.com/where-to-stay



Tours

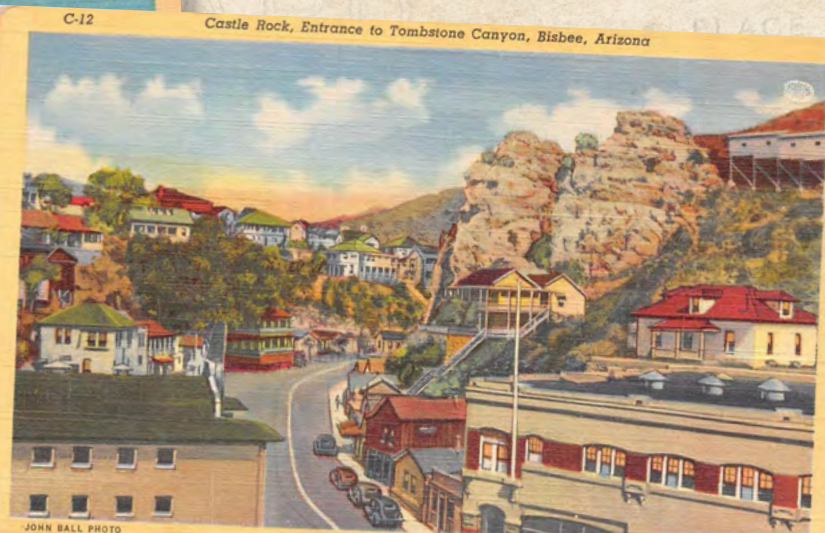
There are plenty of tours you can take during your stay in Bisbee. There are self-guided walking tours of the architecture styles. The Queen Mine Tour takes you underground into the copper mine. Historic tours are offered on jeeps, golf carts and even electric bikes. Ghost tours are very popular and are sold out just about every night. Check to see if you need make reservations for the tour you plan to take. Click the link below for more details.

discoverbisbee.com/tours

C-13 Cochise County Court House, Bisbee, Arizona



C-12 Castle Rock, Entrance to Tombstone Canyon, Bisbee, Arizona



explore COCHISE COUNTY

#RoamCochise

Use Bisbee as your home base to exploring all there is to do in Cochise County. This area is rich with wonderful activities that will engage and inspire the whole family. Visit world-class birding destinations, top-rated dark sky viewing areas in the Chiricahua National Monument, and a robust wine county.

explorecochise.com



Birding

Our high mountains, grasslands, waterways, and cooler temperatures – an unexpected southern delight – attract a wide variety of birds throughout the year. From thousands of wintering Sandhill Cranes, to Elegant Trogons, to hummingbirds and secretive owls, Cochise County offers world-class birding year-round. Bring your binoculars and boots, and find out why birds (and birders) flock to this famous southeastern Arizona destination!

explorecochise.com/bird-watching

Hiking

Cochise County is a paradise for the lover of all things outdoors. If you enjoy outdoor activities, Cochise County has loads of sunshine, miles of hiking trails, expanses of open range, and beautiful sky islands.

Cochise County offers state and national parks, national forest service stops, and national wildlife refuges. The county's incredible outdoors is calling!

explorecochise.com/hiking

Wine Tasting

Arizona's wine industry is flourishing in Cochise County with the opening of new vineyards and tasting rooms. The majority of Arizona's wines are produced from Cochise County grapes.

In fact, the Willcox region of Cochise County grows 74% of all wine grapes produced in Arizona. The Willcox wine growing region was also recently granted AVA status (American Viticultural Area).

explorecochise.com/wine-tasting

