

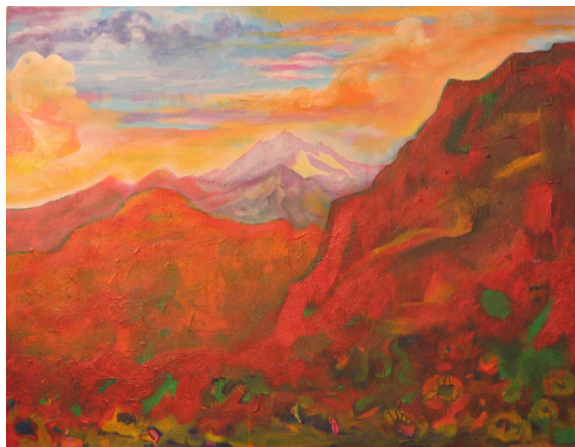


Harris Rosenberg

Painter

Harris, a native of Bronx, N.Y., was born in 1958. As a painter, he describes himself as “self-taught” although he has attended classes and seminars at some of our nation’s finest universities. An adherent of the Dada Movement influenced by Joan Miro, Max Ernst, Dean and Mondrian,

Harris finds abstract and fantasy landscapes emerging from his brush. This artist uses acrylic on canvas, pen and prism color on paper, watercolor and mixed media to create works of abstract expressionism. By anyone’s measure, his landscapes are a delight to behold.



Contact:

rosebisbee@yahoo.com

P.O Box 689

Bisbee, AZ 85603